

BULK SOLIDS HANDLING EQUIPMENT

SCREW CONVEYOR ACCESSORIES

螺旋输送机配件

OUTLET END BEARING ASSEMBLY XTA Series XTA 系列出口终端支撑

XT 系列出口终端支撑总成是螺旋喂料机中必不可少的连接件，是用于螺旋尾端支撑叶片主轴用。
 XT series of export terminal support assembly is an indispensable connector in the screw feeder, is used for spiral tail support blade spindle.

出料口尾端支撑 Outlet End Bearing Assembly

XTA

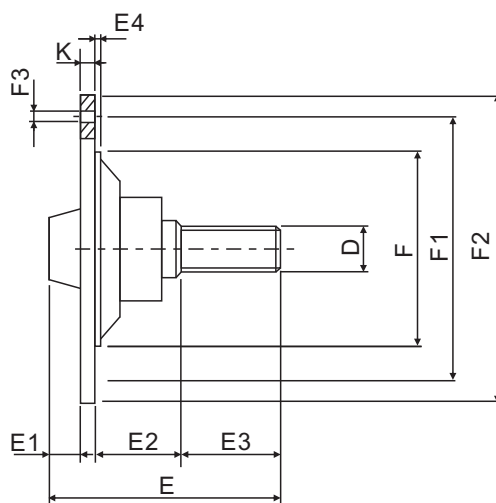
Code 代号

X T A 0 0 E S A

喂料机 Ø Feeder	
0= Ø114-139	3= Ø 219
1= Ø 168	4= Ø 273
2= Ø 193	5= Ø 323



OUTLET END BEARING



连接尺寸 CONNECTION SIZE

Code 代码	Ø Feeder 适用螺旋 ØD	DIN 5482 ØD	E	E1	E2	E3	E4	ØF	ØF1	ØF2	F3		K	KG	Bearing 轴承
											Ø	N°			
XTA00ES0A	114-139	28×35	175	50	54	65	2	148	170	190	M8	4	12	3	6006-2RS
XTA00ES1A	168	40×36	197.5	32	72.5	85	3	162	220	250	M10	8	14	7	6008-2RS
XTA00ES2A	193	40×36	197.5	32	72.5	85	3	186	220	250	M10	8	14	7	6008-2RS
XTA00ES3A	219	40×36	197.5	32	72.5	85	3	210	250	275	M10	8	15	7.5	6008 2RS
XTA00ES4A	273	40×36	197.5	32	72.5	85	3	265	305	330	M10	8	15	9.5	6008-2RS
XTA00ES5A	323	40×36	197.5	26	72.5	85	4	315	370	405	M10	8	15	15	6008-2RS

Dimensions in mm